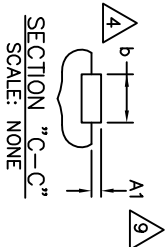
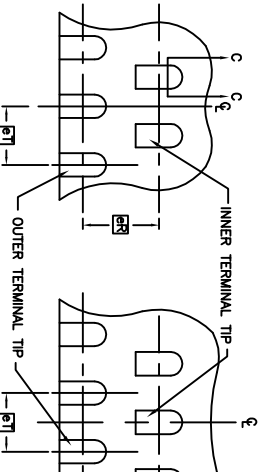
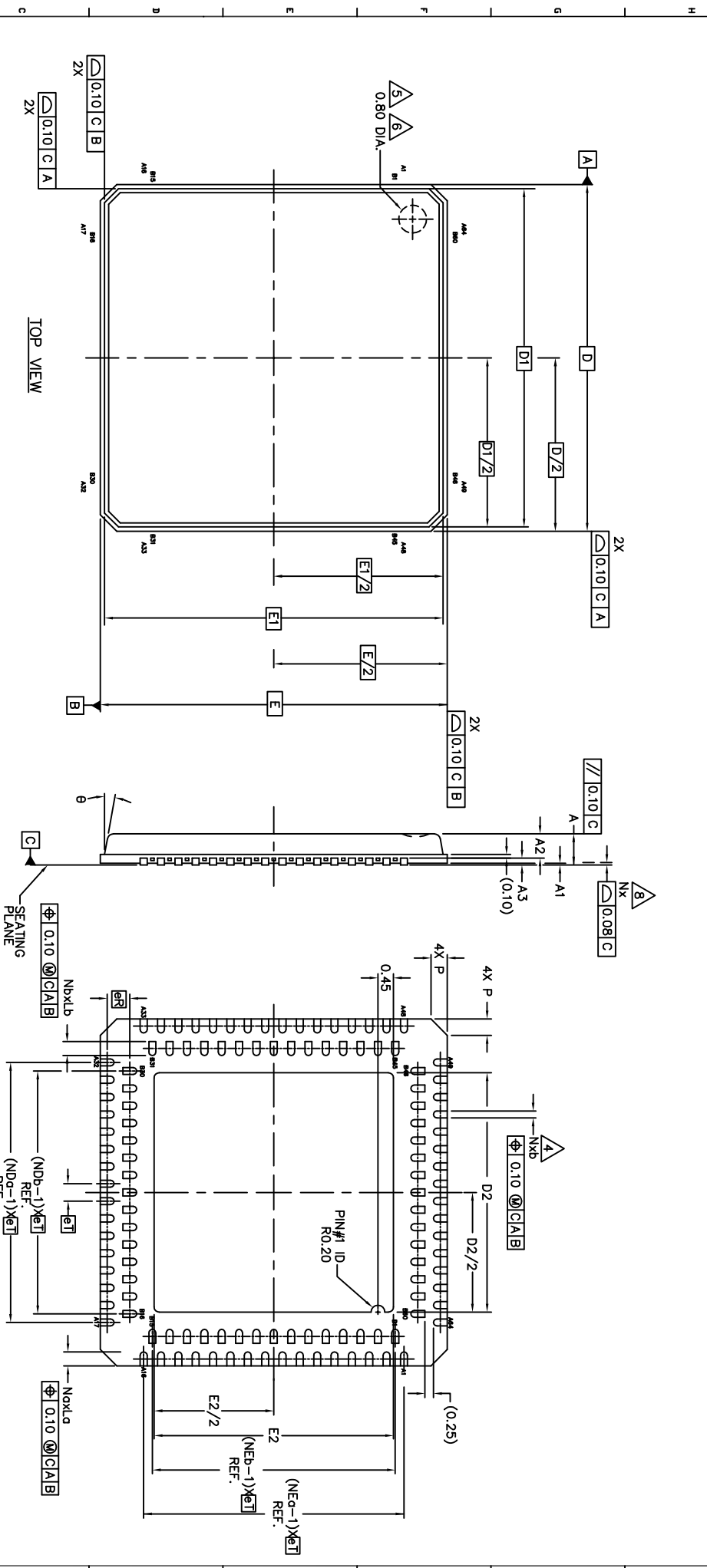


REVISION HISTORY		DATE	OPERATOR	INSPECTOR
00	INITIAL RELEASE	05/24/05	HJLEON	HJLEON



FOR ODD OUTER TERMINAL/SIDE      FOR EVEN OUTER TERMINAL/SIDE

THE DRAWINGS AND INFORMATION CONTAINED HEREIN ARE THE EXCLUSIVE PROPERTY OF AMKOR. THE INFORMATION, DRAWINGS AND DESIGN CONTAINED HEREIN ARE CONFIDENTIAL/PROPRIETARY AND SHALL NOT BE RELEASED TO ANY THIRD PARTY WITHOUT THE EXPRESS WRITTEN PERMISSION OF AMKOR.

UNLESS OTHERWISE SPECIFIED, DIMENSIONS ARE IN MILLIMETERS. DECIMAL ANGULAR 3.1°		TWO ANGLE PRECISION	
X.X ± .1			
X.XX ± .05			
X.XXX ± .025			
INTERPRET DIM AND TOL PER ASME Y14.5 - 1994			
TYPICAL: SEE CHART ABOVE			
FORMING IS AN ACTUAL SCALE			
FORM NO. MFR-LT-84.DWG			
APPROVALS	DATE	TITLE	NO.
DESIGNED: HJLEON 09/04/04	09/04/04	PACKAGE OUTLINE DUAL ROW MLE 124 LEAD BODY ETCHED 0.50 mm LEAD PITCH, INTERSTITIAL TYPE PUNCH SIMULATION	00
CHECKED: JUNKON 09/04/04	09/04/04		
PRODUCT MANAGER: KENWAL			
RELEASER: SWEED	09/24/05		
PART NUMBER: A3		REV: N/A	REV: 00
FORM NO. MFR-LT-84.DWG		001-0000-3817	9-1
WWW.AMKOR.COM		312039	1 of 2



www.amkor.com