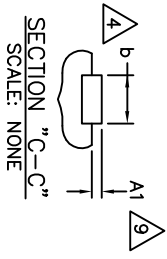
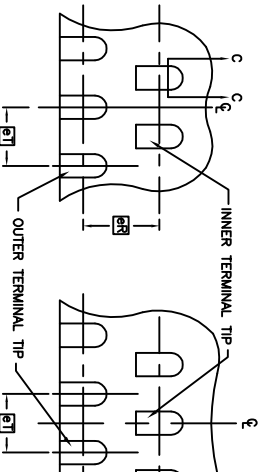
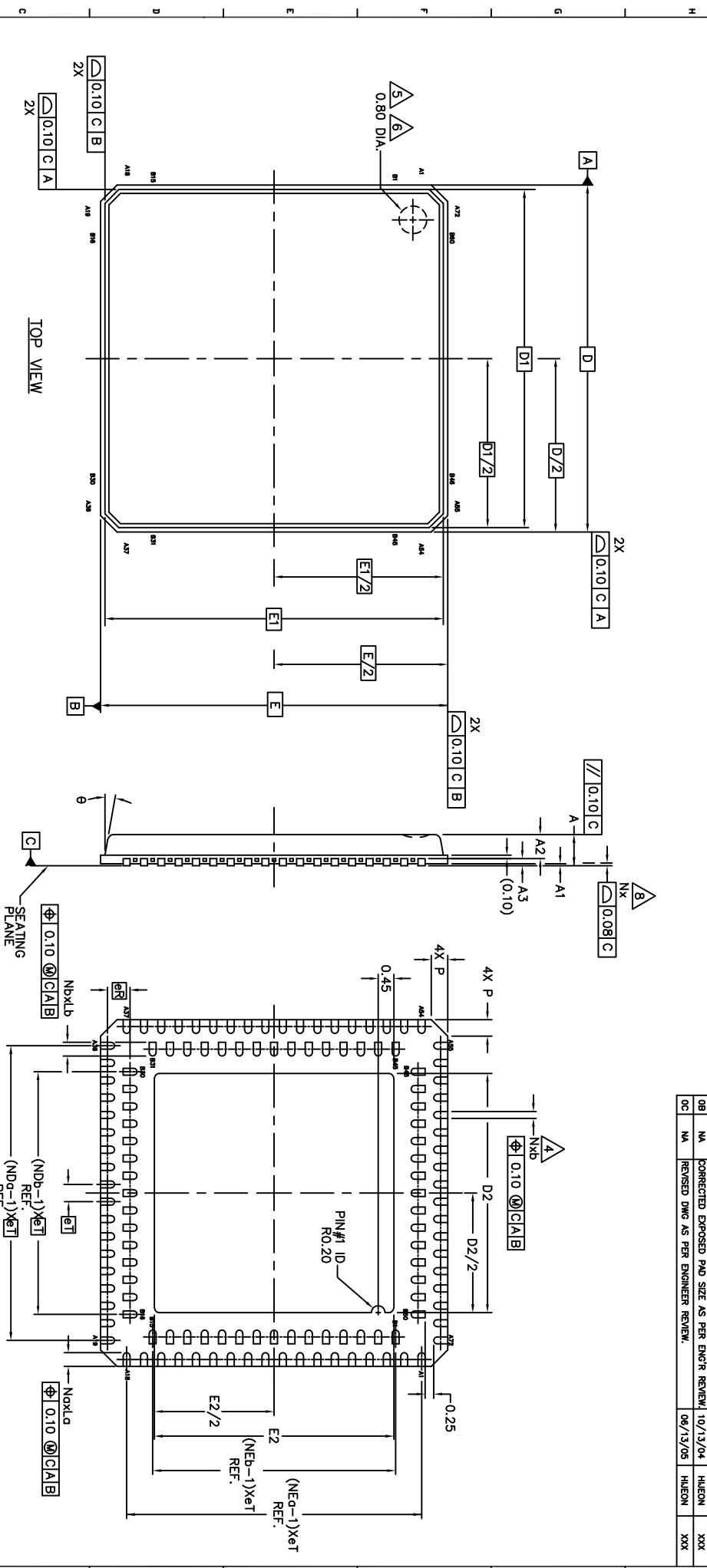


REVISION HISTORY		DATE	DESIGNER	INSPECTOR
0A	NA	INITIAL ENGINEERING REVIEW	10/12/04	HLICEN
0B	NA	CORRECTED EXPOSED PAD SIZE AS PER ENGR'S REVIEW	10/13/04	HLICEN
0C	NA	REVISED DWG AS PER ENGINEER REVIEW	09/13/05	HLICEN



FOR ODD OUTER TERMINAL/SIDE      FOR EVEN OUTER TERMINAL/SIDE

<p>UNLESS OTHERWISE SPECIFIED DIMENSIONS ARE IN MILLIMETERS ANGULAR 3.1°</p> <p>DECIMAL XXX ± .1</p> <p>XXX ± .05</p> <p>XXX ± .025</p> <p>INTERPRET DIM AND TOL PER ASME Y14.5M - 1994</p> <p>NOTE: SEE CHART ABOVE</p> <p>PRINTING IS AN ACTUAL SCALE</p> <p>FORM NO. MFR-LT-64.DWG</p>		<p>THIRD ANGLE PERSPECTIVE PROJECTION</p> <p>APPROVALS</p> <p>DATE</p> <p>DESIGNED: HLICEN 10/12/04</p> <p>CHECKED: JNDKON 10/12/04</p> <p>PRODUCED: KEDWA 10/12/04</p>	<p>PACKAGE OUTLINE DUAL ROW MIF 132 LEAD BODY ETCHED 0.50/0.65 mm LEAD PITCH, INTERSTITIAL TYPE PUNCH SIMULATION</p> <p>FORM NO. MFR-LT-64.DWG</p> <p>314327</p> <p>1 of 2</p>
---	--	---	--



THE DRAWINGS AND INFORMATION CONTAINED HEREIN ARE THE EXCLUSIVE PROPERTY OF AMKOR. THE INFORMATION, DRAWINGS AND DESIGN CONTAINED HEREIN ARE CONFIDENTIAL/PROPRIETARY AND SHALL NOT BE REPRODUCED OR TRANSMITTED IN ANY FORM OR BY ANY MEANS WITHOUT THE EXPRESS WRITTEN PERMISSION OF AMKOR.